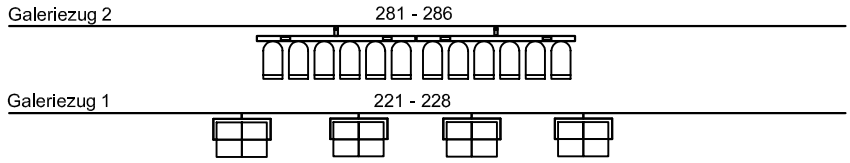


287
288
289
290
291
292

2. Gl. Galerie

D502
13
14
15
16
17
18

Bühnenversätze

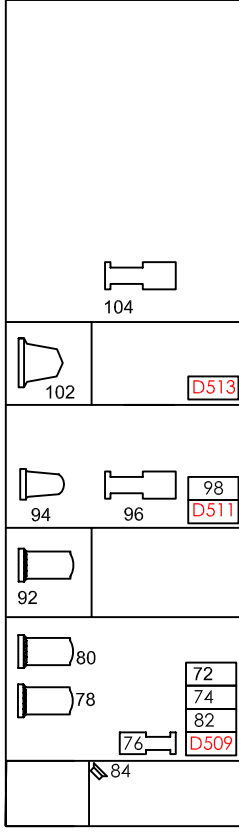
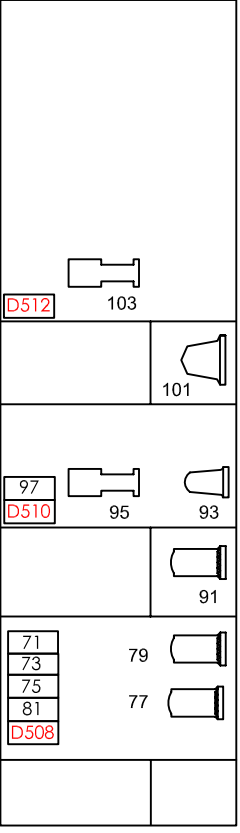
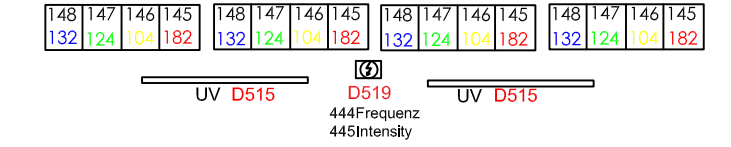
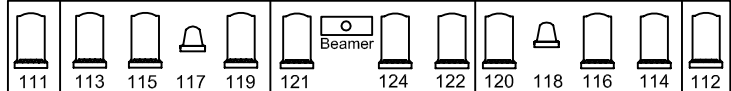
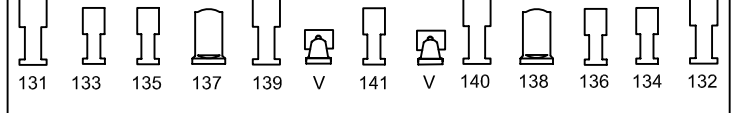
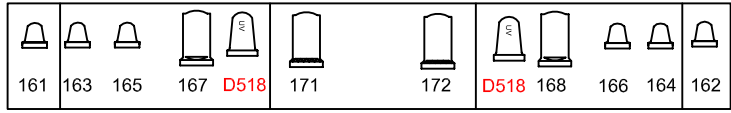
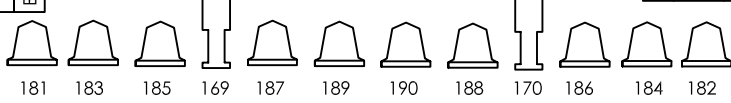
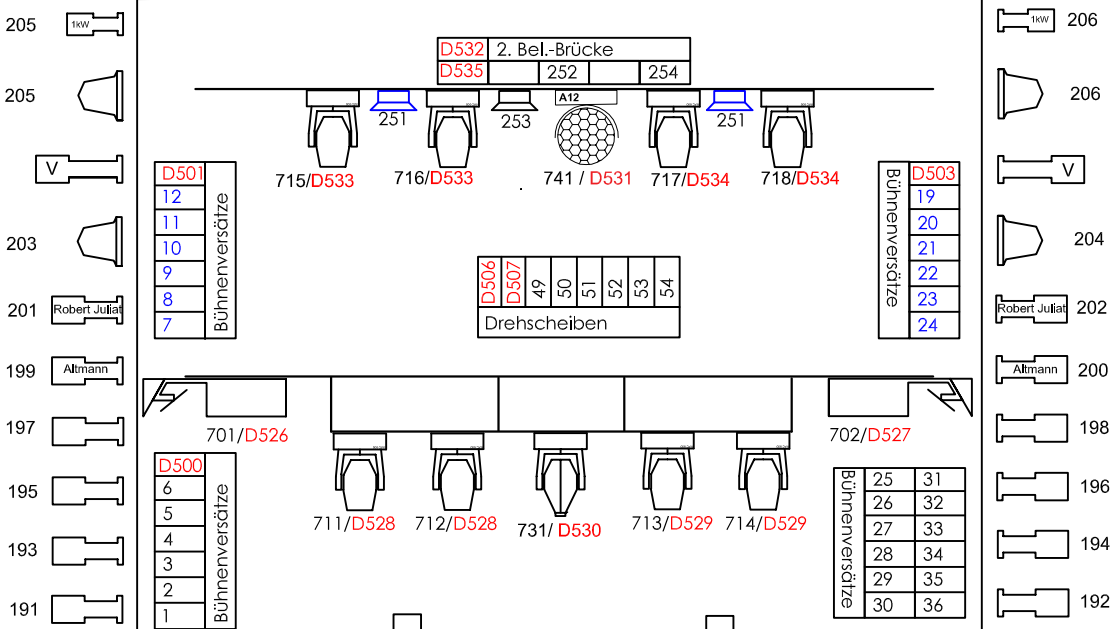
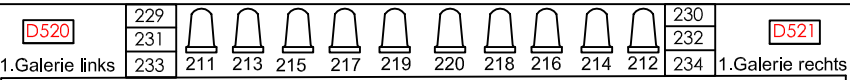


D525
276
275
274
273
272
271

2. Galerie links

D524
266
265
264
263
262
261

2. Galerie links



Scheinwerferplan Vogtlandtheater Plauen / Bühnenhaus

	MAC 500		4-Kammerrampe 4 x 400W		NV 500W		HPZ 1 kW 15/35°		HS 2000		HP 2000		Halofluter sym. 1000 W		UV-Rampe LSL 1,2m
	MAC 2000		A12 Stroboskop		NV 1000W		HPZ 1 kW 25/45°		HS 1000		HP 1000		Halofluter sym. 500 W		Halofluter asym. 750 W
	MAC 600		PAL 1200		NV 200		HPZ 2 kW 15/35°		HS 500		HP 500		6er ParBar		
	UV Fluter		ETC 750 W		UV Fluter		ETC 750 W		HMI		PAR 64				